



PRELIMINARY

Explanation of Part Number

Standard Part Number

WPANT A4 L R1 000 03 X
(1) (2) (3) (4) (5) (6) (7)

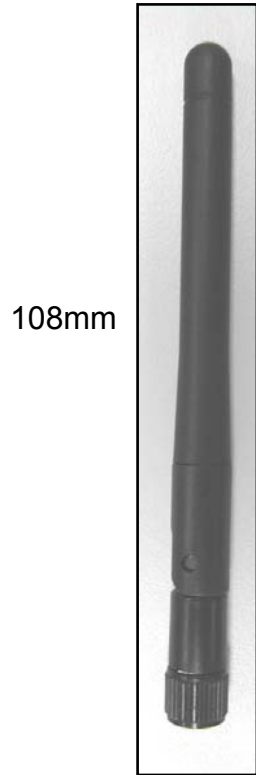
<p>(1) Product Type Antenna</p> <p>(1) (2) Appearance Series A1: Single Band (Standard) A2: Dual Band* A3: Triple Band* A4: Ultra Wide Band (UWB)</p> <p>(3) Frequency L: 3 GHz ~ 5 GHz M: 3 GHz 10 GHz</p> <p>(4) Cable Type R0: No Flying Lead* R1: RG-178 (Standard) R2: 1.13mm OD micro-coaxial* R3: RG-316*</p>	<p>(5) Cable Length 3 digits, in mm</p> <p>(6) Connector Type 00: No connector, Flying Lead 01: TNC 02: R-TNC 03: R-SMA (Standard) (Shown below) 04: SMA 05: MCX 06: MMCX 07: RA-SMA 08: IPEX MHF 09: BNC 10: Hirose WFL 11: Other</p> <p>(7) Suffix for special requirements</p>
--	--

*Specifications available upon request

Following Specifications pertain to Standard Part Number, WPANTA4L Series

Electrical Properties

Item	Property
Frequency Range	3 ~ 5 GHz
Impedance	50Ω
VSWR (see Fig. 2)	2.0 [Max]
Return Loss (see Fig 1)	
Peak Gain	2.46 dBi [Typ.]
Polarization	Linear
Radiation Pattern	Near omni-directional in the horizontal plane
Bandwidth	> 2200 MHz
Efficiency	60% [Typ.]





Following Specifications pertain to Standard Part Number, WPANTA4L Series

Figure 1. Return Loss (3 ~ 5 GHz)

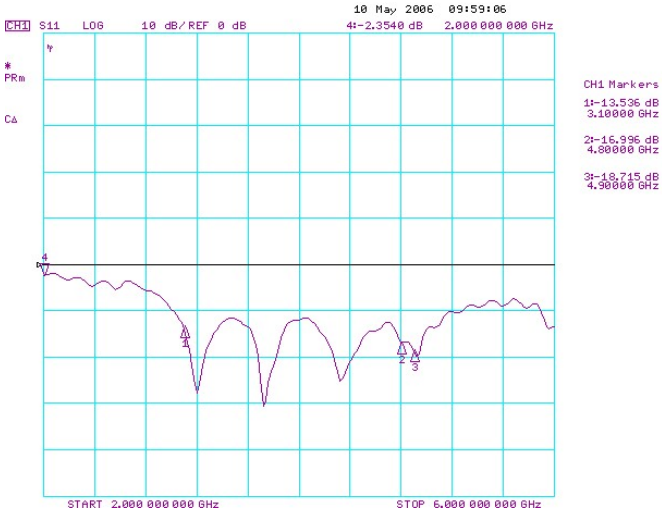


Figure 2. V.S.W.R (3 ~ 5GHz)

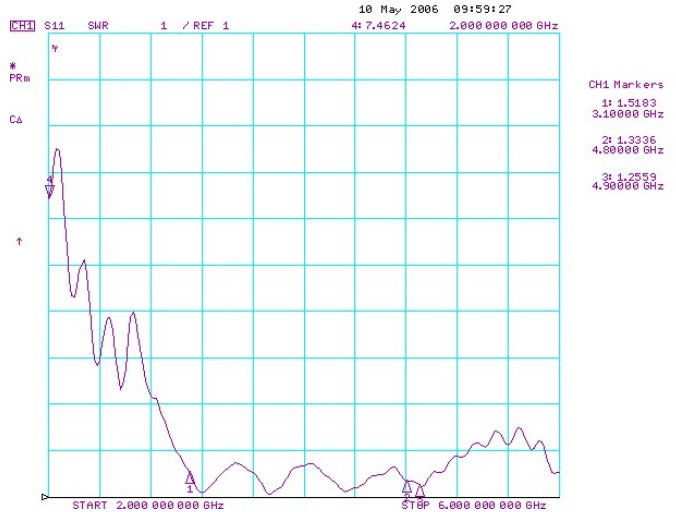


Figure 3. 3D Pattern (f = 3.5 GHz)

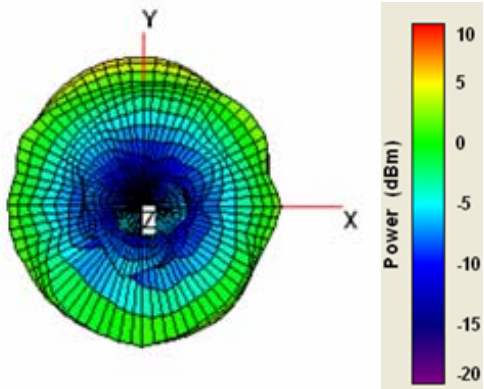


Figure 4. 3D Pattern (f = 4 GHz)

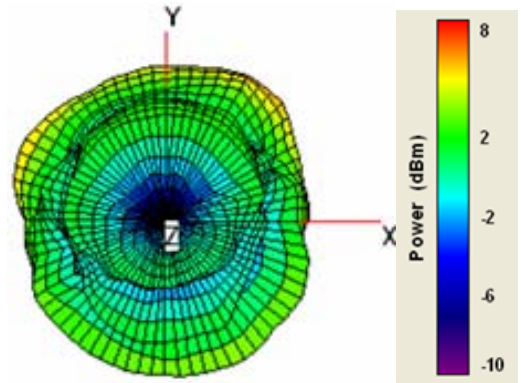
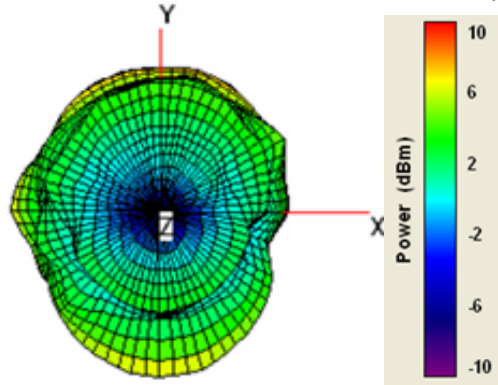


Figure 5. 3D Pattern (f = 4.5 GHz)





Mechanical Properties

Item	Property
Color	Black
Plastic Cover	TPU
Antenna Base	PC
Connector	RP-SMA

Operating Temperature: -20~+65°C

Storage Temperature: -20~+65°C